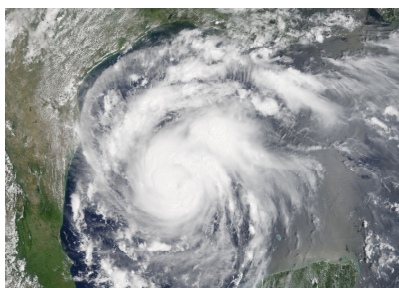


"Engaging the disinterested to walk in the HOPE of Jesus"

For Such a Time As This

As I write this, vast swaths of Houston and other much smaller towns in Texas and beyond are flooded with several feet of water as a result of Hurricane Harvey. Meteorologists have said this is a once in 500 years weather event. FEMA says they will be there for years rebuilding, relocating, and restoring people, homes, and whole communities.



While the devastation is shocking and may make us thankful to live in Seattle, many of you are wondering what we can do to help. Certainly, some of you will already have donated to various relief agencies by the

time you read this. If not, I would invite you to consider bringing help and hope in one or more of three ways:

- 1) **PRAY** - for hope and God's presence for the people who have lost everything and those who will try to help meet their needs.
- 2) **GIVE FINANCIALLY** - while there are many worthy organizations to support, I would recommend the Texas District of our denomination of churches, the LCMS. They are already on the ground and in the water connecting with our sister churches and schools and their people. You can give online at <https://txlcms.org/how-can-i-help-hurricane-harvey/> or you can give through Lutheran World Relief at <https://lwr.org/donate/domestic-disasters>. LWR will also be pursuing relief efforts for Hurricane Irma, which is still activating affecting those areas, as we print this newsletter.
- 3) **CONSIDER GOING to SERVE** - As the specific needs become clear, we will let you know about opportunities you might want consider for being a part of a Hope Team of volunteers to go to Texas and other storm-affected areas. There will be houses to gut and restore, debris to be cleaned up, and people to be encouraged.

Closer to home, there are lots of great things planned for this fall as we dive deeper into discovering what it means to "walk in the Hope of Jesus!" I strongly encourage you to attend worship weekly throughout this fall and to consider being part of a linkHOPE small group. While you can grow a lot in your faith on Sunday mornings, a lot of life-change can happen more effectively in small groups: in other words, circles are better than rows.

We are currently in a five-week message and small group series called *Living Generously* that will explore what it means to live with a generous attitude towards others. Starting October 15, we will take a look at five key values of the Reformation as we join with Christians all over the world in celebrating the 500th Anniversary of the Reformation and the work of Martin Luther and other reformers. We will also host a West Seattle Reformation worship celebration on Sunday, October 15, at 6:30 p.m.



You are also encouraged to attend a Puget Sound Reformation Celebration service and event at Overlake Church in Redmond on the afternoon of Sunday October 29, with a goal of 2500 attendees from Lutheran and other churches. See more information on the back page of this newsletter.

*It's going to be an amazing time of growth
at Hope this fall!*

Lastly, I want to encourage you to attend Hope's Men's or Women's retreats. These are life-changing weekends filled with time to relax and pursue adventures, experience great worship and teaching, and join in laughter and conversation. Both of these will be great weekends! Sign up online today at hopeseattle.org/renewhope and look for more information on the next page.

The storms and floods down south are a reminder that we don't control nearly as much of our lives as we would like to think we do, but the good news is that God is faithful to provide what we need. As we each go through the various joys and challenges of life, may we always look to God in faith to be our "refuge and strength, our ever-present help in trouble" (Psalm 46:1). He knows your name and your story and He loves you more than you can possibly imagine! Trust Him with every part of your heart and life today!

In His Strength and Peace,



Pastor Peter

Hope 2017 Fall Retreats

5th Annual Men's Retreat

Friday, September 29 - Sunday, October 1
Tall Timber Ranch, Lake Wenatchee



*We are excited to have a live speaker with us this year—
Dr. Jim Masteller!*

Jim will challenge and share with us about learning to rest in God's love for us on the path towards genuine masculine strength - harnessed by God.



Friends, this weekend is going to be awesome!

In addition to Jim's teaching, there will be inspiring worship, times of adventure, and laughter around the campfire all set in the beauty of the cascade mountains at the edge of the Glacier Peak wilderness!

"I strongly encourage you to register online at hopeseattle.org/renewhope as soon as you can - this will be a great weekend in your life if you do!"

Questions? Contact Peter Mueller at pmueller@hopeseattle.org. Invite a friend!



Annual Women's Retreat

Friday, October 13 - Sunday, October 15
Pilgrim Firs Conference Center, Port Orchard



"Living Water"

*An In-Depth Look at John 4:1-42
Come and meet the woman at the well!*

Our weekend will include special instructors and our favorite activities including prayer partners, creative crafts, book study, and more!

Pick up the brochure in the Commons. Register online at hopeseattle.org. Saturday only rate is available.

Register by September 24 to reserve your spot!

Retreat Book Club Selection -

Our book for the retreat is "Quenched - Christ's Living Water for a Thirsty Soul" by Donna Pyle. We are excited to explore this book together! Books are available, while supplies last, for \$12, in the church office. (Office hours Monday - Thursday, 8 a.m. - 5 p.m.)



Hope School News



Spread the word! Invite your neighbors, friends and family to visit and meet the amazing Hope School staff, tour the campus and learn more about the great programs here at Hope.

**Referrals by our current families
are still the most impactful way in
which we are introduced
to new families!**

KINDERGARTEN INFORMATION NIGHT Tuesday, October 24, 6:30 p.m.

Is my child ready for kindergarten? We will provide information regarding kindergarten readiness and what to look for in kindergarten from our Preschool Director Mrs. Figgins, as well as hear more about our kindergarten program from our highly experienced teacher, Mrs. Neafcy. Please call the school office at 935-8500 or email admissions@hopeseattle.org for more information.

ALL SCHOOL OPEN HOUSE

Tuesday, November 14, 6:30 p.m.

It isn't too early to begin looking at local educational options. The All School Open House gives you a time to meet all preschool – 8th grade staff, visit the classrooms and learn more about the many robust programs at Hope School. This is a great time to invite friends or family who are looking at private school options.

Refreshments will be provided. Please call the school office at 935-8500 or email admissions@hopeseattle.org for more information.

PRESCHOOL OPEN HOUSE

Tuesday, January 9, 2018, 6:30 p.m.

Make sure to add the Preschool Open House to the calendar. Most preschools begin to register students for the coming fall at this time, so it is never too early to do your research. Bring your child(ren) and watch them explore and play in the fun environment that will become like a second home to them. Teachers will be on hand to answer questions and talk about our play-based approach to learning and building a strong foundation for your little one to grow from. Refreshments will be provided. Please call the school office at 935-8500 or email admissions@hopeseattle.org for more information.

LWML - The Mighty Mite

by Irene Gehring

What does LWML stand for?

How well I remember Pastor Mueller's comments on an LWML Sunday at Hope several years ago. He said that as a young boy he concluded that LWML meant "Lutheran Women Make Lunches." Of course, we all chuckled when we heard him say that in his message to us. But...I have thought of that and have come to the conclusion that it is partly true! LWML - Lutheran Women's Missionary League - also called Lutheran Women in Mission - does provide LOTS of lunches and so much more also.

MITES is a wonderful part of LWML. Recently, as LWML met in convention, the attendees voted to set the MITE goal for 2017 - 2019 at \$2,075,000. Yes, you read that correctly. Grants were approved totaling over 2 million dollars! In the recent past, that figure has been two million, which has been met and exceeded in each biennium. Such grants as Lutheran Hour outreach in Egypt, Sharing Jesus with People with Disabilities - Bethesda Lutheran Communities, Christ for Veterans and Their Families - LCMS Armed Forces, and many more will

be blessed by the Mighty MITE. All 22 grants are listed on an information sheet in the Commons area next to the large MITE box.

You, fellow Christians, can make a profound difference in the world with your gifts to the MITE project. Simply pick up a small box in the Commons, fill 'er up, deposit your full box into the large MITE box in the Commons, and pick up an empty one for more MITE giving. Kid MITE boxes are also available in the Commons and in the entrance of our school. As you give generously, prayerfully and lovingly, your MITES will be blessed by the Lord. This is one of many wonderful ways to share God's love and His promises to the world. Thanks and praise be to God for MITES!



Member Updates

BAPTISM:

We welcome into the family of God:

Daughter of Ryan and Nicole Tarabochia, baptized on June 4, 2017.

WEDDING:

God's blessings to *Gerd Krause and June Jossy* on their marriage. Their wedding ceremony took place on August 24, 2017, at Hope Lutheran Church.

NEW MEMBERS:

We welcome the following who completed the Spring Hope 101 class and were accepted into membership on Sunday, June 25:

Eric Cooley & Katherine Harper-Cooley
(and their children)

Zack & Amber Fernandez
(and their children)

Lois Fulwider

Mike & Jennifer Kistler
(and their children)

Henry & Kim Lee
(and their children)

Julie Liveris

John & Marci Reschar (LCMS Transfer)

DEATHS:

We offer our Christian sympathies to the families of the following loved ones who went to their eternal rest.

- Betty Bradley passed away August 15
- David Hein passed away August 24

ADDRESS/PHONE/EMAIL CHANGES:

Please contact the church office for updates.

Rev. Keith & Ginny Eilers

New Address

Lorraine Huppert (living with family in Buckley)

New Cell

Jeff & Mary Norton

New Address

Eric & Meagan Slawson

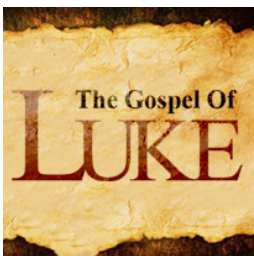
New Address

George & Patrice Wolanin

New Address

Priscilla Bible Study

The Priscilla Bible Study group welcomes all women as we start our fall study on Monday, September 19, at 12:30 p.m. Join this diverse group of women for fellowship in God's Word, continuing in the book of Luke.



Please note: new meeting time, day, and place:

12:30 - 1:45 p.m. on the third Monday of each month in the Fireside room (downstairs next to Youth Room - can enter through the church office front door.) Our new co-leaders are Marie Dowding and Lois Brumberg. We look forward to seeing you on Monday, September 18, at 12:30 p.m.

SLHS Open House

Thursday, October 26, 2017
7:00 - 8:30 PM

Seattle Lutheran High School has a unique and successful approach to education. Join us for our Open House to discover what makes us uniquely better. It will feature a tour of the facility, as well as interaction with Seattle Lutheran's faculty and administration. Enter through the gymnasium which is located on Genesee Street between 41st and 42nd Avenue S.W. For more information contact Rachel Bigliardi at 206-937-7722 or visit our website at www.seattlelutheran.org



CONNECTION

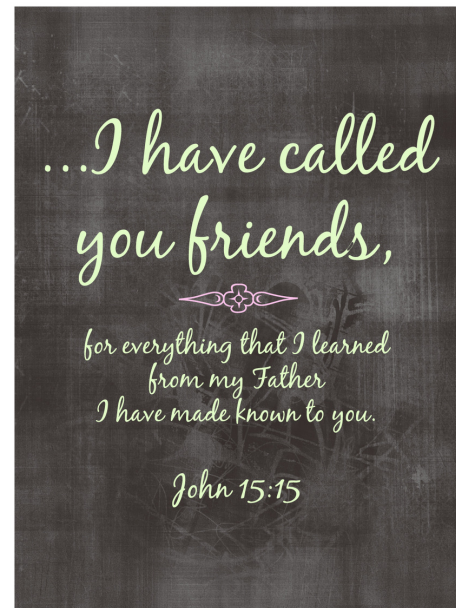
Because of the Lord's great love, we are not consumed, for his compassions never fail. They are new every morning: great is your faithfulness."

Lamentation 3:22-23

This section of Scripture always inspires me. Regardless of the latest thing attempting to consume me, my heart is always lifted as I remember each morning I can start again with joy because of God's unfailing and faithful love. We all need to be reminded of this. Jesus encouraged his disciples as he was preparing to leave them; *"I no longer call you servants, because a servant does not know his master's business. Instead, I have called you friends, for everything that I learned from my Father I have made known to you. I no longer call you servants, but friends."* John 15:15

One of our core values at hope is **CONNECTION: Jesus-Centered Friendship**. We believe that life change happens best in circles, not rows. What we mean by that is that no matter how helpful a weekend worship gathering is, deep life change often happens best in the context of face to face relationships with other Christians. Jesus knew that we needed deep intimacy with him and with one another in order to thrive in life. In isolation we often forget the life giving promises of God. Therefore, he calls us friends and gives us the gift of "Jesus centered friendships" where we can risk being truly known and restored through God's unfailing love and faithfulness.

There are many opportunities for "Connection" at Hope this fall. I challenge you to step out of your comfort zone and participate in one or more of the following: Small groups are forming and will be discovering what it means to "Live Generously" for five weeks. Celebrate Recovery is another ministry where true connection happens. The upcoming Men's and Women's Retreats offer opportunity to experience the unfailing love of God through Jesus centered friendship. Join the Journey and experience genuine Connection that will make a difference.



Mug Mates

Mug Mates is a program designed to promote greater connection between women of Hope by sharing prayer needs and special interests. Contact with your mug mate throughout the year is encouraged to establish a friendship.

How do I participate? It's easy! Simply:

- 1) Bring a mug in a brown paper bag to church on Sunday, October 22, or to the office during the following week. Complete a Mug Mate form and include it in the bag.
- 2) Pick up a mug bag on Sunday, October 29, in the Commons. Write down your name and who you got on the list by the Mug Mate box.
- 3) Contact your Mug Mate right away to let her know you are her Mug Mate.

4) PRAY for your mug mate.

Mug Mate Forms are coming soon to the Commons!

Sylvia Baxter will host a "Meet Your Mug Mate Dessert" on Friday, November 11, at her home, providing an opportunity for you to meet in person. Questions? Contact Sylvia Baxter or the church office.



Elder Extra: God Answers Prayers

by Arlie French

“Remember you are a child of God, God will always be there for you no matter what; you can always go to him in prayer”. This is part of my blessing to children when I serve communion on Sundays. As I reflect back on my life and faith journey, it is very evident God was always there for me no matter what.

When I was eight years old I broke my leg when the tongue of a single axel hay trailer landed on me. My siblings and I were running back and forth on the deck of the flatbed trailer, each end of the trailer would go up and down like a teeter-totter as we ran from one end to the other. When I jumped off the trailer the tongue hit my leg as it was coming down. I'm sure I would not be here today if it would have landed on my head. I remember my father praying for me as we drove to the hospital.

When I was eleven I was riding Zeb, my father's 1,200 lb. quarter horse, bareback with my cousin behind me. We were bringing in the cows for the afternoon milking. As we approached the barn, going up a slight incline, Zeb jumped over a small tree on the trail, causing my cousin to slide off Zeb's back and pulling me along with him. The next thing I knew I was holding the left side of my head. Zeb had stepped on it and my left ear was badly damaged. As my mother drove me to the hospital I remember her praying for me.

Another time, I was Elk hunting in the Blue Mountains when a snowstorm hit. It snowed so hard and fast it covered the trail and I could not find my way back to



camp. I started praying big time. God answered my prayers and guided me back to camp safely.

In August of 2014, Marci and I were camping at Steamboat Rock on Banks Lake in Eastern Washington.



We were in a boat on the lake with another couple to watch the sunset, something we have done many times over the years while camping. On the horizon we could see what we thought was smoke from the wild fires headed our direction. As it got closer we realized it was not smoke but a dense wall of dust proceeded by extremely high winds and pelting cold rain, we were being engulfed by a Haboob. The wind was creating 3-4 foot swells and we were taking on water and in danger of capsizing. We needed to get to shore fast! We could not see through all the dust and had no idea where the shoreline was. I prayed for God to watch over us and guide us to safety. We eventually made it to shore and spent the next 3 hours waiting for the storm to pass. We finally arrived back at our campsite wet, cold, and thankful! God answered our prayers.

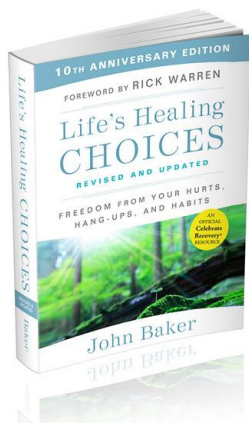
These are just a few of my life experiences and testament that God answers prayer.

So, remember you are a child of God, God will always be there for you no matter what; you can always go to him in prayer.

Arlie French
Elder

Celebrate Recovery Update - Team Hope

The leaders of *Celebrate Recovery – Team Hope* have spent the summer months working together through a small-



group study of John Baker's book entitled '*Life's Healing Choices*.' Through this we applied Celebrate Recovery principles in our own lives while preparing to share out to other small group bible studies and the church and West Seattle community. The team has visited several other CR groups in the area to build relationships and learn from other leaders and participants.

In addition, seven leaders were grateful to join some 5,000 attendees at Saddleback Church in Orange County, California for the August 2017 Celebrate Recovery Summit West. The Summit offered a combination of many workshops aimed at empowering leaders to build thriving Celebrate Recovery groups, fellowship events for attendees from all over the Western part of our country to get to know one another and share stories and encouragement, and profound keynote speakers and worship experiences.

We heard compelling speeches by Saddleback founding pastor Rick Warren and Celebrate Recovery founders John and Cheryl Baker; numerous inspirational testimonies from Celebrate Recovery leaders who are sharing Christ's love along with challenges from their own past to serve a myriad and growing list of groups such as Veterans, children and teens grappling with a multitude of life challenges, youth of incarcerated

parents, prison outreach, motorcycle gangs, International groups and many more; provocative deliveries by Hosanna Poetry; amazing worship bands; and even hysterical, on-point messages from The Skit Guys. There was so much valuable, life-transforming information and experiences for all to take away.

CR Team Hope continues to invite all in our Hope family to experience the freedom and joy of healing, and to encourage others in healing, from our "Hurts, Habits, and Hang-Ups."

Celebrate Recovery offers real benefits to virtually everyone - those with relational or boundary challenges, food issues, stress or anxiety burdens, workaholics, recovering from a traumatic event, destructive tendencies to a wide variety of behaviors or substances - or who care for someone in such categories. Namely, most every one of us! The team looks forward to re-launching CR Team Hope in the near future, including offers for guided small-group studies. Thank you to all who have contributed support to CR Team Hope to date.



If you are interested in finding out more about Celebrate Recovery contact Gwen Fraser: gfraser49@msn.com, or crteamhope@gmail.com, and please continue to pray for our leaders in this journey.

Update on Purchase of Property

The purchase of property adjacent to Hope's north parking closed on Thursday, September 7, 2017!

**WE HAVE
GOOD NEWS**

This is a significant step in securing Hope's place in West Seattle for years to come. Thank you to Eric Slawson, Walt O'Brien, and Delores Kannas, who oversaw many details in closing this transaction. After receiving over \$340,000 in gifts toward this purchase and by using a portion of the Brick by Brick funds, Hope borrowed

\$640,000 from the Lutheran Church Extension Fund to complete this purchase. The required monthly loan payment is \$3009.52, which will be partially offset by rental income from the two houses on the property. We offer our deep and humble thanks to all who have contributed.

For more information, contact Board of Directors Chairperson, Walt O'Brien, 206-937-5311; Pastor Peter, or Parish Administrator, Julia Doerr, at 206-937-9330.

Her Name is Morgan

Jonathan Kopecky, Youth Minister, jonathan@hopeseattle.org.

Her name is Morgan and she will be baptized this summer. Before we dig into her story, let me share a little of mine...

When I became a Christian I was seventeen years old. The church I first attended catered to its own congregational youth—their style and their way of thinking—until Tim came along. He was the DCE and did things differently. The church was located next door to a high school called Millard North. The smokers would hangout before and after school in the far corner of the church parking lot. Tim would repeatedly walk over and chat with them. The smokers always thought they were going to get kicked out or told how bad smoking is and they should quit and to “get outta here.” But Tim never said any of those things. He told me he would just hangout with them and chat.

I was a Junior when I first met Tim and it shocked me. I didn’t know too many Christians like Tim. My grandmother was probably the only “real” Christian I knew at the time and she had a slightly more condescending tone to life. But Tim wasn’t like that. So, when he met me, a AAA hockey player who had to fight for every ounce of respect; a party-er who chewed while he hunted and fished; a wakeboarder and barefoot skier; someone who never said no to a challenge; a natural pessimist and someone who seemed to always fall short of his father’s praise; Tim wasn’t bothered by any of it. He was able to see past the masks and see the beauty of the person God meant me to be. And he taught me that. Tim loved the church and he loved the committed youth and their families, but he never settled for status quo.

I started watching the way Tim interacted with youth and he became intriguing. I wanted to know why. Why did he love youth the way he did? Why did he put so much effort into making sure we knew that God didn’t make a mistake when he created us?

And why was he such a terrible golfer? He would get turkey after turkey in bowling, but in golf he would become the turkey. But his heart was incredible and I needed to understand it.

I started attending youth group more often. We would party at my friend’s house and then we’d go to church the next morning. (I’m not promoting this, but this is how God got through to me.) At one of the first Bible studies, we read some verses and I raised my hand to ask a question that everyone else knew the answer to. Tim graciously answered me and then we kept reading. I raised my hand again and asked a question and everyone turned their heads around in utter disbelief. Tim answered and we kept going. A third time my hand went up and this time Tim said, “Jonathan, would it be okay if you wrote down

your questions and I’ll answer all of them after youth group?” And he did. He took time. He took about a year’s worth of time and walked with me, challenged me and helped me see, hear, and understand the person of Christ. He changed my world so much that I accepted his invitation to go work on houses in Savannah, Georgia the following summer. *“That was the summer I made a commitment to Christ and would ‘Never Be The Same.’”*

I lived a lifestyle far removed from that of a DCE, but one man’s heart changed my heart. God had it all planned out, but it still took that man to pursue what God gave him. I would say I disrupted youth group a lot, but Tim responded well and loved me through it.

The general church does a great job of catering to committed youth and families who are already part of the church. But how are we doing with the “disinterested” ones? How are we reaching, loving and pursuing the ones like *me*?

Two years ago I was approached by Bob Fossum (Director of Family Ministry, NW District) to lead a group of my fellow district DCEs to plan a District Youth Gathering called TheONE. My aim was to design a gathering that catered to reaching high school students like I was. That person back in 2000 wasn’t more special or unique than other students. That person back in high school was pretty generic, actually. Because when you get down to the heart of most high schoolers, they are all pretty similar in one important way: they want to know God didn’t mess up when they made them, they want to be loved and they want to be heard. I used to be disinterested. But because of Tim I became intrigued, hungry and then transformed.

So, back to Morgan. Morgan went to TheONE gathering with other youth from another church in Puyallup and she



was baptized this summer! Praise God for the leaders who take time to love disinterested youth, to walk with them and to guide them, because it might just change their path.

Keep praying for the youth already part of our church. Pray they see themselves as missionaries to their friends, family and community.

“Very truly I tell you, whoever believes in me will do the works I have been doing, and they will do even greater things than these, because I am going to the Father.”

-John 14:12

Blessings,
Jonathan

Human Care Ministries - October Focus: WestSide Baby

Elissa Sommer, Director of Human Care Ministry, esommer@hopeseattle.org

During the month of October Human Care Ministries will be collecting Baby Diapers - especially sizes 4, 5, and 6, along with Pull-Ups, 4T and 5T (both genders).

It is estimated that over 21,000 children, ages five and under in King County, live below the federal poverty line. Poverty has been linked to “toxic stress” in children.

Long-term studies show that toxic stress, when experienced in the first three years of a child’s life, can significantly impede brain development. Without it, kids brains are free to develop fully. If a child’s basic needs are met, then some of the immediate stressors are removed for the parents, enabling them to provide better care—and for kids to just be kids.

WE CAN HELP!

WestSide Baby was founded in 2001 by a new mom who recognized the stresses of caring for an infant.



Located in White Center, WestSide Baby, provides children’s essentials to local families by partnering with established local social service agencies already assisting low-income families. Agencies order items from them and they deliver to families who are homeless, living in transitional housing, or simply in need of a little help

during a difficult time. They are not able to do “direct service” to families but work instead through agency partners such as food and clothing banks, public health nurses, family support workers, and DSHS social workers. These service providers work directly with families and are able to assess their most urgent needs.

An adequate supply of diapers costs between \$70 and \$100 a month, a cost not covered by food stamps or other assistance programs, which forces some families to choose between buying diapers and food.

WestSide Baby is the only social service agency in the west King County area that collects, inspects, and distributes free diapers, clothing, cribs, and safety gear for babies and children. More than 120 local social service agencies rely upon them to provide critical necessities for low-income families.

For more information about this go to: westsidebaby.org/



Financial Summary - August 2017

Summary of Revenue & Expenditures

	Current Month	Year to Date	Budget	Favorable (Unfavorable) Variance
Offerings	\$ 40,850	\$ 89,983	\$ 118,724	\$ (28,741)
School Income	110,685	232,603	257,000	(24,397)
Interest & Other	308	1,130	705	425
Total Income	151,843	323,716	376,429	(52,713)
Personnel Expense	117,226	244,240	267,817	23,577
Supplies Expense	33,169	46,353	50,041	3,688
Facilities Expenditures	9,615	10,811	15,583	4,772
Debt Service	17,694	35,388	35,388	(0)
Missions	2,750	2,750	1,833	(917)
Total Expense	180,454	339,542	370,662	31,120
Operating Surplus	\$ (28,611)	\$ (15,826)	\$ 5,767	\$ (21,593)

Dear Members and Friends of Hope –

For some time, I have wanted to make a change in the financial statement presentation at Hope to bring Hope's fixed asset balances up to date. The July 1, 2017 conversion to a new financial system provided me the opportunity to do just that. Some churches make adjustments after the end of each fiscal year to record depreciation expense on fixed assets and to reclassify the principal portion of loan payments against the loan balance (during the year, this portion, along with the interest portion, is classified as "Debt Service" in the budget so that the congregation can easily see and approve the amount of cash being spent on such payments). I plan to make these adjustments at the end of the current fiscal year, which is June 30, 2018. I believe this new presentation will give our members a better picture of the overall health of Hope. Please contact me for more detailed statements or if you have any questions.

Together in His service –

Julia Doerr

Parish Administrator

NOTES TO THE FINANCIAL STATEMENTS:

Net Fixed Assets – Hope's Fixed assets are recorded at historical cost. The large balance in the buildings line item is related primarily to the 2008 "Journey of Faith" Building project which connected the church and school buildings together and provided additional ministry space. Please contact the church office for a copy of the Depreciation Policy.

Long Term Endowment Assets are funds that are permanently restricted according to donor stipulations. The gifts were received between 1971 and 2006. The earnings from a majority of these funds are recorded as an increase in Temporarily Restricted Net Assets and are to be used for financial assistance for those in pastoral training at one of the two LCMS seminaries or in training for professional church ministry. The funds are invested with the Lutheran Church Extension Fund. These funds are separate from the Hope Lutheran Foundation.

The \$100,000 deposit is an Escrow Deposit made in advance of the property purchase.

Designated Funds – NOT FASB117 are those funds that do not carry donor restrictions. FASB117 is an accounting rule that requires the classification of an organization's net assets into unrestricted, temporarily restricted and permanently restricted classifications. Amounts classified as "Designated Funds – NOT FASB117" do not carry donor restrictions and are thus classified as liabilities. The largest such fund is the School Technology Fund which contains technology fees from school families and is used to pay for school technology-related purchases. These types of Designated Funds are common in churches.

Temporarily Restricted Net Assets are those designated funds that carry either a time or purpose -related donor restriction.

Hope has a **Note Payable** to the Lutheran Church Extension Fund--Missouri Synod (LCEF), secured by a mortgage on all real property, due in monthly payments of \$17,694 including interest at the funds cost of funds plus 2% (3.875% at December 31, 2016, maturity November 2039). Total outstanding at June 30, 2017 is \$3,121,586.

On September 7, 2017, Hope completed the purchase of a parcel to the north of our campus for \$1,000,000. See additional information on page 7.

Statement of Financial Position for August

Hope Evangelical Lutheran Church of Seattle, WA
Fiscal Year Beginning 7/1/2017

-	<u>8/31/2017</u>	<u>6/30/2017</u>
Assets		
Current Assets		
Cash	\$1,260,584	\$1,121,308
Prepaid Expenses	\$5,347	\$9,070
School Receivables, Net	\$942,059	\$2,024
Total Current Assets	<u>\$2,207,991</u>	<u>\$1,132,402</u>
Net Fixed Assets		
Land	\$1,500	\$1,500
Buildings	\$5,833,322	\$5,833,322
Building Equipment	\$113,881	\$113,881
Furnishings	\$21,595	\$21,595
School Building Equipment	\$28,695	\$28,695
Vehicles	\$51,100	\$51,100
Reserve For Accumulated Depreciation	(\$1,092,848)	(\$1,092,848)
Total Net Fixed Assets	<u>\$4,957,245</u>	<u>\$4,957,245</u>
Deposits	\$100,000	\$0
Long Term Endowment Assets	\$142,661	\$142,661
Total Assets	<u>\$7,407,897</u>	<u>\$6,232,308</u>
Liabilities & Net Assets		
Current Liabilities		
Accrued Payroll & Other	\$48,459	\$48,945
Deferred School Registration & Tuition	\$1,094,094	\$175,605
Total Current Liabilities	<u>\$1,142,553</u>	<u>\$236,364</u>
Long Term Liabilities		
Notes Payable - Long Term	\$3,121,586	\$3,121,586
Designated Funds-NOT FASB117	\$79,652	\$54,109
Total Liabilities	<u>\$4,343,791</u>	<u>\$3,412,059</u>
Net Assets		
Total Unrestricted Net Assets	\$2,433,768	\$2,449,595
Total Temporarily Restricted	\$487,677	\$227,993
Total Permanently Restricted	\$142,661	\$142,661
Total Net Assets	<u>\$3,064,106</u>	<u>\$2,820,248</u>
Total Liabilities & Net Assets	<u>\$7,407,897</u>	<u>\$6,232,308</u>



4456 - 42nd Ave SW, Seattle, WA 98116

Non-Profit Org.

U.S. Postage

PAID

Seattle, WA

Permit No. 779

Peter Mueller, Senior Pastor pmueller@hopeseattle.org

Dan Jackson, Deacon djackson@hopeseattle.org

Julia Doerr, Parish Administrator jdoerr@hopeseattle.org

Kristen Okabayashi, Principal kokabayashi@hopeseattle.org

Patra Mueller, Family Life Minister patramueller@hopeseattle.org

Jonathan Kopecky, Youth Minister jkopecky@hopeseattle.org

Amy Kopecky, Dir. of Music Ministry akopecky@hopeseattle.org

Elissa Sommer, Dir. of Human Care Ministry esommer@hopeseattle.org

Patrice Wolanin, Secretary church@hopeseattle.org

Sunday Schedule:

8:00 am Traditional Worship

9:30 am Education & Sunday School Hour

10:30 am Contemporary Worship

Phone: 206-937-9330

www.hopeseattle.org

E-mail: church@hopeseattle.org

Reformation Sunday, October 29 - Puget Sound-Wide Gathering



This year marks the 500th anniversary of the nailing of the *95 Theses* to the castle church door at Wittenberg Germany by the young Augustinian monk, Martin Luther. This singular event brought about a reformation of the Church leading people back to what the early church fathers saw as the guiding light of all Christian faith and life - the Word of God. Join us in worship of our Lord at Overlake Christian Church on Sunday afternoon, October 29, at 4:30 pm. The church is located at 9900 Willows Road NE, Redmond, 98052. Fellowship and refreshment will be available on site after 2:30 pm.

Sponsored by *Lutheran Ministry Services Northwest*, our gathering together promises to give heartfelt expression in thanksgiving to God. Dr. William Weinrich of Concordia Theological Seminary, Ft Wayne, Indiana is the featured speaker. The Rev. Paul Linnemann - President of the Northwest District of the LCMS - will be the presiding minister.

It is a good thing that we join together to build each other up in the faith which saves!