



### ***Merry Christmas and Happy New Year!***

---

In a world of information overload, Jesus brings one clear message this Christmas: there is Hope! There is hope for forgiveness for the guilty; hope for peace for the anxious; hope for courage for the fearful; hope for strength for the weak; hope for life for the dying; hope for love for the unloved; hope for joy for the sad; hope for anyone and everyone who would put their repentant faith in Jesus, the Messiah-Savior of the World, the soon newborn King!



What parts of your life could use an infusion of Hope this Christmas and into the new year of 2016? I encourage you to take some time during this Advent season and into the new year to pray and reflect on

that question. Then spend time in prayer asking God to bring that to you. Go looking in His Word for that hope and trust that you will find it. Serve others with the resources of time, money, skills, and energy that God has entrusted to you. As we shine the hope of Jesus into our world, God brings it into a bright new level of clarity in each of our hearts, minds, and lives.

As we head into the new year, there are many opportunities coming up to grow in our "walking in the Hope of Jesus." Three opportunities I would like to highlight are the following:

We will soon have a **new website and mobile app** available to provide new and updated ways to connect to Hope, access resources like recorded sermons, digital newsletters, online, app-based, and text message giving, devotional resources and much more. Watch for more information soon!

**Financial Peace University:** This is a great nine week, Biblically based course in personal finance featuring video based-teaching from personal finance guru Dave Ramsey as well as live discussion and encouragement. Topics include money and marriage, saving, budgeting, retirement and college education planning, paying off debt quickly, and

much more...whether your finances are in great shape or could be a lot better, there is something significant for you to learn. If you've never been a part of this renewHOPE experience, consider participating this next year beginning on January 25, 2016 - registration information is elsewhere in this newsletter.

**ReFrame Course:** If you've ever wondered where God is in your life Monday to Saturday, or whether your work matters, or how you can best serve God with who you are, the tools you have, and the passions He gave you, this is the renewHOPE experience for you. I am excited to let you know that Hope will offer the *ReFrame Course* from my alma mater, Regent College in Vancouver, BC to help you answer those questions and more. The reality is that Christians around the globe struggle to connect their faith to every aspect of life—whether it's tending a garden, caring for children, or negotiating a business deal. ReFrame is a film-based discipleship course designed to address this gap. Through TED-style talks from Regent faculty and interviews with on-the-ground practitioners and thought leaders, ten 40-minute film episodes explore how Christ reframes our lives and our world. The course will be offered Monday evenings from 7 - 8:30 p.m. beginning on January 18. Contact me to sign up, and start seeing life differently!

Lastly, very soon you will start seeing new Hope logos in various communication pieces from Hope and we want you to know the story behind them! As Hope's Board of Directors and it's Vision Pathway Team completed a new strategic plan for Hope almost a year ago, it was a natural time to consider a new logo and associated branding tools. Please take a look at the insert in this newsletter for a detailed explanation of the meaning of the new logos and process behind them. Ultimately, the new logos will help us more than ever before to be known as "the church of good news" as we work to engage the disinterested to walk in the Hope of Jesus - this Christmas, in 2016 and beyond!

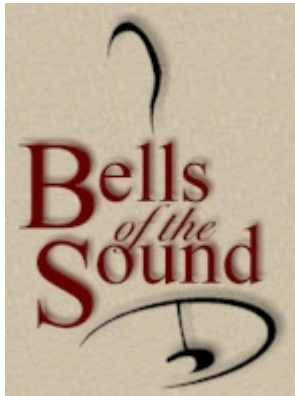
In His Strength and Peace,  
Pastor Peter

# Women of Hope Ministry Action Team News!

Your MAT members: *Gwen Fraser, Karen Webster, Ginny Eilers, Patra Mueller, Korene Schultz, Dianne Koltz.*

## PRISCILLA BIBLE STUDY GROUP

Meeting on Friday, December 11, 5:30 p.m. at the home of Karen Webster. (Arrive when you can before 6:45 p.m.)



Bring light snacks to share and bring a friend. At approximately 6:45 p.m. the group will carpool to Tibbetts Methodist Church for the *Bells of the Sound* concert. Cost is \$10 donation or \$8 for seniors. *"Bells of the Sound" is a nationally acclaimed handbell ensemble that has been pioneering handbell artistry and excellence since 1989. This group*

*of 15 auditioned musicians is known for their high-caliber, energetic and entertaining performances."* Join us for this highly entertaining, beautiful music program.

## GIFT & GOODIES SALE - A SUCCESS!

The Women of Hope Ministry Action Team extends a heartfelt thank you to the many people who gave generously of their time and talents to make this year's sale a wonderful success! A very talented group of women worked behind the scenes, spending their Saturday to make the Fellowship Hall an attractive venue to show off the many tempting hand crafted items donated by talented artisans and bakers; for that we thank you. Next a very generous group of shoppers donated a total of \$5479! 20% of the proceeds will go to Lutheran Ministries Northwest to support their chaplaincy program, and 80% toward replacing the well-worn carpeting in the church office entryway. Thank you!

## ReFrame Course: See Faith Differently



**Monday Evenings, 7-8:30 pm**

Beginning Jan. 18th/16

**Hope Lutheran Church, Room TBD**

**Contact Pastor Peter**

[pmueller@hopeseattle.org](mailto:pmueller@hopeseattle.org)

How can I best serve God with who I am, the tools I have, and the passions he gave me?

Christians around the globe struggle to connect their faith to every aspect of life—whether it's tending a garden, caring for children, or negotiating a business deal. ReFrame is a film-based discipleship course designed to address this gap.

Through TED-style talks from Regent faculty and interviews with on-the-ground practitioners and thought leaders, these ten 40-minute episodes explore how Christ reframes our lives and our world. Start seeing differently today.

Watch the trailer at:  
[reframecourse.com](http://reframecourse.com)

 **Regent**  
College  
MARKETPLACE INSTITUTE

IN ASSOCIATION WITH:

THE WASHINGTON INSTITUTE

Faith, Vocation & Culture



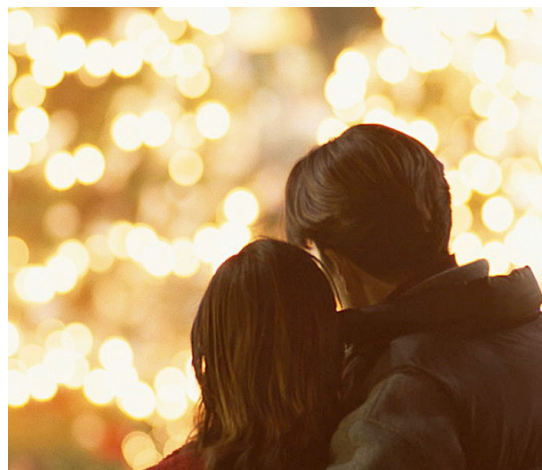
## God Loves MARRIAGE

While Bernadette and I were spending some time with each other the other day I asked what her favorite “us” Christmastime memory was. She had to think on that one for awhile. (OK, no snide comments!) Her reaction didn’t surprise me however, because I had the same reaction to the question. Now, before you label me as a loser, let’s remember that Christmastime is a time of giving, of commemorating Jesus’ birth and His dwelling with us, and a time for celebrating with family and friends, so we try not to focus on ourselves. Nevertheless, it did seem odd that neither of us had a particularly strong favorite Christmastime memory. You should know that Bernadette and I each have family in the area, and with immediate and extended family, friends, and church commitments added to an already full schedule, it’s a really busy season for us. Don’t get me wrong- we love the holidays. We love the Christmas lights, and have great family traditions of putting up the tree and decorations. We have our favorite Christmas music (we suggest you check out Pandora’s Michael W. Smith holiday station). We love sharing holiday meals and goodies, and when we have a fourth person staying with us we enjoy playing pinochle ‘til 2 in the morning, especially if it’s snowing outside and we don’t have to go to work the next day! We have our favorite family movies to watch- “A Christmas Carol”, “The Grinch”, and “Scrooged” are some favorites, and if you haven’t seen the documentary “The Star of Bethlehem” yet, you need to! Also, check out Lutheran Hour Ministries “The Real St. Nick: Leader, Legend or Lie” at [www.lhmmen.com](http://www.lhmmen.com), then search “studies.”

Yes, the holidays can also be a very stressful time of deadlines, crowds, traffic, obligations, and budgets sucking the joy out of the season. When that happens, the holiday season can actually cause a loss in “love bank units” between you and your spouse. If Bernadette and I get sucked into that kind of feeling, we start peeling off the “urgent” until we get to the “important.” When you get down to what’s important in life, it always seems to come down to relationship—relationship with God and with those important to you. So, we start peeling off the

stuff until we get to relationship. Now, we don’t have a problem with the holidays themselves, in fact God ordained several Feasts and Festivals in the Old Testament including: Passover, the Feast of Unleavened Bread, Firstfruits, the Feast of Weeks (Pentecost), the Feast of Trumpets, the Day of Atonement, etc. But sometimes we get caught up in all the commercialization of the holidays and we lose the focus on relationship, including ours. So it’s important to try to spend some time alone with your spouse during the holiday season. I remember Pastor Peter shared that he and Patra attend a performance of Handel’s Messiah every holiday season. That’s a good one. For some others it might be as simple as taking a stroll through the Garden d’lights at Bellevue Botanical Garden, or maybe at Point Defiance Zoo, or at Warm Beach Camp in Stanwood—all of which are really good family outings as well. One year, we went to Ocean Shores in mid December, did a little shopping and just hid out for a while. (That was her favorite memory, by the way.) You can go for a nice dinner out and take in the Nutcracker or some other holiday performance. Some couples like to stay at a nice hotel downtown, or in Bellevue, Portland etc. and stroll through town window shopping and seeing the sights. Whatever you decide, just make sure you give the gift of spending some quality time with your spouse this season. *And speaking of spending some quality time, make sure to save the afternoon and evening of Saturday, January 30, for Hope’s Marriage Event!* Save it to your calendar now, especially if you will need to line up a babysitter. Better yet, arrange to take them to the grandparents for an overnigher!

We wish you a most enjoyable and blessed Christmas!



# Notes and News

## BAPTISM:

*We welcome the following into the family of God:*

Son of Jonathan and Amy Kopecky, baptized on August 9, 2015

Daughter of Aaron and Katherine Arnold, baptized on November, 25, 2015

## DEATHS:

Our Christian sympathies to the families of the following loved ones who went to their eternal rest.

October: *William Galloway, Nancy Rodeman, Dorcas Schoewe, Norma Trinklein,*

November: *Rev. Robert Meyer, June Thies,*

## ADDRESS/PHONE CHANGES:

*(Contact the church office for information.)*

*Paul Brott:*

*Bobbie Mowery:*

*Roger & Kathy Roberts:*

*Sean & Julia Stolte:*

*Jim Wahl:*

**THE 2016 LUTHERAN ANNUAL** - If you would like to order the 2016 Lutheran Annual, please bring in payment of \$28 to the church office by December 13. This Annual is helpful for professional church workers and those wanting contact information for other LCMS churches. (Note for Lutheran Annual on your check.)

## NEW MEMBERS RECEIVED:

*We welcome the following who have completed the Hope 101 class and were accepted into membership on November 22, 2015:*

*Tim and Leah Caudle (and children)*

*Korie Creson and Jennifer Marshall (and child)*

*Diane Mebust*

## AED ON SITE!

We are blessed at Hope to have an automated external defibrillator (AED) on our campus. In 2003, Hope made the important investment of purchasing this important life-saving device for our campus; it is located on the north wall of the Commons. AEDs are small medical devices that are intended for use by lay persons to treat out-of-hospital cardiac arrest before the arrival of emergency medical services providers on the scene. Longtime member, Delores Kannas, has faithfully managed the required maintenance and training for our device over the years and has registered it in a new dynamic AED registry that will increase the likelihood that a device can be located and be ready to be used on a victim of cardiac arrest. Thank you, Delores! We are very fortunate that the AED has not yet needed to be used at Hope.



## Hope 365 Next Steps

*Does God have a mission?*

*What is God up to in my everyday life?*

*Does God care about this world – animals, mountains, trees, rivers, lakes, cities, neighborhoods, homes, families?*

*How did I see God at work this week?*

*What good can I do in my neighborhood?*



Join Pastor Kris Kunkel as he helps guide and facilitate us. We'll dive into these questions and others to initiate steps toward proactively engaging our community.

**When:** Saturday January 23, 9 a.m. – 2 p.m.

**Where:** Hope Commons

**Why:** To become equipped to engage disinterested friends and family to walk in the Hope of Jesus!

*Partnering with Parents so our children will KNOW, LOVE, and SERVE Jesus.*

As you prepare for Christmas, instead of getting caught up in the stress of preparations, I invite you to intentionally simplify your life and join your children in worship at home during the season of Advent. **What is Advent?** It is the four weeks before Christmas - set aside as a season in the church year to prepare one's heart for the birth of Jesus. Advent is a great time to participate in special family traditions such as lighting a candle each week on an Advent wreath or opening an Advent calendar each day to find a specific Bible verse to read together as a family. Singing Christmas carols after dinner each night as a candle is lit is also another way to focus on the birth of Jesus. Make plans to prepare your hearts for Christ's birth as a family!



## Sunday School

"The Christmas Program - Special Report" will take place on Sunday, December 13, during the 10:30 service. Plan to join us for this special service where children will share their talents of song, dance, and the reciting of the Christmas story to glorify the Christ Child. You will enjoy joining the children in singing familiar Christmas carols and hearing the history of Christmas traditions around the world.

**Family Faith Events** - A special thanks to the families who participated in the family faith events this fall! You did a great job putting together school kits for Lutheran World Relief and organizing the food from the school food drive! Mark Sunday, January 24, on your calendar and watch the bulletin for details on our next Family Faith Event.

## UPCOMING

**Marriage Enrichment Event** - Saturday, January 30! Mark your calendar now for this special opportunity to strengthen your marriage! (*See Marriage Moment article on page 3 in this newsletter.*)

**VBS** - (Vacation Bible School) coming July 18-22, 2016!

# Human Care Ministry

Elissa Sommer, HCM Director, 206-909-0159, [esommer@hopeseattle.org](mailto:esommer@hopeseattle.org)

## GIVING TREE

**Gift of Wrapping** - Spend your afternoon wrapping or give just a few hours at the gift wrapping party from 12:30 - 6 p.m. on Sunday, December 6, (lunch provided) or anytime between 9 a.m. - 8 p.m. December 7 - 17.

**Gift of \$\$** - If you don't have time or the energy to do one more thing, you can give \$\$ for HCM to buy needed items.

**Gift of Prayer** - You can give one more gift by praying for the people from the Giving Tree! Their needs continue.

## LOOKING AHEAD

If you see clearance-sale prices on Christmas wrapping paper or items for next Christmas-toys, bath kits, new clothing, please consider buying them. We collect year-round, and we can easily store items for next year OR if you get a gift you'll never wear or use, consider "re-gifting" it to the Mission Box.



**January and February** - We are collecting baby clothing and blankets. Globally, baby items will go into layettes for refugee camps, areas of disaster or dire poverty; locally, we give to Clothesline, Hickman House and Westside Baby. If you don't have baby things, check out thrift stores or mention it to relatives with growing babies.

Thanks to all of you who generously gave items and funds for HCM and Lutheran World Relief.

*We thank God for all of you. We remember before God your service prompted by love and faith.*

*1 Thessalonians. 1:3-4*

**As we start the new year, may we continue with our love and giving...**for our families, friends, neighbors we know, and the destitute neighbors we do not know.

*"Whoever is kind to the poor lends to the Lord, and will be repaid in full." Proverbs 19:17*

## CHRISTMAS PERFORMANCES

Get in the spirit of Christmas by attending one or more of Hope School's Christmas performances!

### **Wednesday, December 9, 7:00 p.m.**

Christmas performance by students in Grades 1-5.

### **Friday, December 11, 6:30 p.m.**

Early Childhood Program (preschool and kindergarten) will perform "C-H-R-I-S-T-M-A-S is Coming!"

### **Wednesday, December 16, 7:00 p.m.**

Middle School musicians will perform in our annual "Sounds of Christmas" concert on Wednesday, December 16 at 7:00 p.m. The concert will feature our middle school chapel band and choir, handbell choir, and glee club performing with the Seattle Lutheran High School band.

*We hope you can join us for these festive events, all of which will be held in the Sanctuary.*

## PARENTS' DAY OUT!

Drop the kids off at Hope while you get some holiday shopping in, have a date, or relax at home. Your kids will enjoy art projects, games, pizza and a movie! Care will be provided by PTH parents.

**When:** Saturday, December 12, 10 a.m. - 2 p.m.

**Where:** Hope School and in the Commons

**Who:** Ages \*3 - 12 (\*must be toilet trained)

**Cost:** \$20 pre-registered or \$25 at the door

Proceeds benefit Hope Lutheran School PTH.

## OPEN HOUSE

### **Preschool Open House**

**January 12, 6:30 p.m.**

We invite all families and friends to our Preschool Open House on Tuesday, January 12, to learn about our programs for 3 and 4-year olds from our Preschool Director, Christina Figgins and staff. Children are welcome and encouraged to come explore the classroom while parents hear how we implement our play-based curriculum. Refreshments will be served. Spread the word to your friends and neighbors!

## Great Gatsby Gala

**April 9, 2016**

Auction committees are in full swing as we get ready for the Great Gatsby Gala this coming April in support of the PTH (Parents and Teachers of Hope)! We are so excited to be



organizing this event that will take us back in time to tops hats, flapper dresses, guys and dolls and speakeasies.

Invitations will go out after the first of the year, however mark your calendars now for what is sure to be a classy evening of frenzied bidding, dining, music and laughter.

We are currently accepting donations toward our silent and live auctions. If you would like to support the auction by donating goods or services, procurement forms are available in the school office or you may contact co-chairs Sally Heit or Sarah Nicol through the School Office. All proceeds from the event support the programs and teachers at Hope School. Need ideas? Here are few ways you can be a part of Hope's success:

- Contact businesses for a donation. We have a list available of businesses needing follow up.
- Donations of ballet, symphony, sports team, theatre, and opera tickets are always popular.
- We are building a "Wine Wall" and are accepting donations of red, white or sparkling wine (\$15 min. value)
- Have a vacation home or airline miles? Do you know of a place to stay on Camano Island to pair with golfing at Camaloch Golf?
- Do you own or know someone who owns a vintage car who would be willing to donate a ride to the auction or to have the car displayed the evening of the auction?





## Dissolution of Calvary Church

We are sad to report that Hope recently received a letter from Calvary Lutheran Church stating that the church, which was started by Hope as a West Seattle mission in 1927, will be dissolved. Calvary sold its building in 2006 and moved to the Kenny Retirement Community. In the letter, they explain that Hope Lutheran Church is named as a recipient of portion of the financial assets and that the assets received should be used by Hope's Human Care Ministry to continue this ministry to the "least of these." We are both heartened and humbled by the gifting of a portion of the assets of Calvary and we commit ourselves to being faithful stewards. No amounts have been specified and we understand that the dissolution is expected to take place in 2016; we will share more information as it becomes known. Copies of the letter are available from the church office (call 206-937-9330 or email [church@hopeseattle.org](mailto:church@hopeseattle.org)). Together with Calvary, we join hands in thanks and celebration for its long history of enriching the lives of countless people. We acknowledge that central to Calvary's long-standing identity is its faithfulness to serving people with Jesus' love and it is our hope that Calvary's members will find joy in knowing that its ministry continues through entrusting some of its funds to Hope. Knowing that we are to use this money in the vast needs of human care is a ministry mirrored by Jesus--to God be all Glory!

*Rev. Clemens Pera contributed to this article.*

## Shared Blessings LCEF Update

Lutheran Church Extension Fund (LCEF), our loan lender, began providing an additional way to serve our congregation through the "Shared Blessings Loan Rebate Program" earlier this year. LCEF will refund a percentage of our mortgage back to Hope based on the number of members who are LCEF investors. We are pleased to announce that we have reached the first tier of the rebate and, next summer, as long as our investor level remains, we will receive a rebate equal to .25% of our mortgage (approximately \$8,000) in the form of a check to be spent at the Board of Directors' discretion. Thanks to all who helped Hope reach the goal!



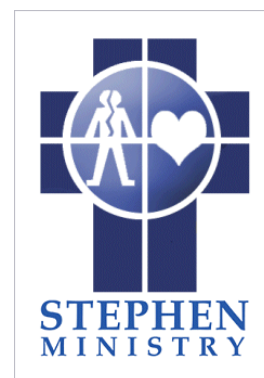
LCEF now has a new 35 month term note that earns a fixed rate of 3.5% that will only be available for a limited time. Flyers are in the Commons. Or, do you need a stocking stuffer for a young person in your life? Consider a Y.I. Club for Young Investors account (offered for children 0-18 with a minimum investment of \$25). Y.I. accounts pay 3.5% on the first \$1,000 plus cash rewards for good grades and service. More information is available in the Commons or you can

## Stephen Ministry Meeting, Monday, January 11 at 7 p.m.

The next bi-monthly gathering of Stephen Ministers will be held on January 11 in the Fireside Room, Oregon Street entrance, at 7 p.m.

The gathering is open not only to trained Stephen Ministers of the past 30 years, but to all members of the congregation who would be interested in the discussion of the topic: "The Importance of Consistency in the Process of Caregiving for Others." All of us have many opportunities for caregiving, something that is very important for us as God's people, knowing that when we love and care for others, we are responding to God's love and care for us.

Please come! The discussions are open, beginning at 7 p.m. and ending by 9 p.m.



This article was adapted and used with permission from Sticky Faith, Youth Worker Edition, by Kara Powell, Brad Griffin and Cheryl Crawford (Zondervan 2011) and originally appeared in the Sep/Oct edition of Immerse Journal.

## Intergenerational Stickiness

It turns out that intergenerational relationships are one key to building lasting faith in students. Silver bullet? No. Helpful if we want students to live their faith beyond high school? Absolutely.

Sadly, many high school students lack these significant relationships. In our effort to offer relevant and developmentally appropriate teaching and fellowship for teenagers, we have segregated (and we use that verb intentionally but not lightly) students from the rest of the church. In interviews and open-ended survey questions, participants shared reflections like this one: “The students seemed to be very separated from the rest of the congregation. Maybe fixing that gap would help unite the church.”

That segregation causes students to shelve their faith. Our study of nearly 500 youth group graduates from around the country has revealed the following important insights about the power of intergenerational relationships in building sticky faith:

*Intergenerational Insight #1: Involvement in all-church worship during high school is more consistently linked with mature faith in both high school and college than any other form of church participation.*

The closest our research has come to that definitive silver bullet is this sticky finding: High school and college students who experience more intergenerational worship tend to have higher faith maturity. Of the many youth group participation variables we examined, involvement in intergenerational worship and relationships had one of the most robust correlations with faith maturity. This is true for our students’ senior year of high school and their freshman year of college.

*Intergenerational Insight #2: The more students serve and build relationships with younger children, the more likely it is that their faith will stick.*

Granted, some of your teenagers opt to serve in children’s ministry because they want to avoid going to the regular service. And sure, others volunteer because their schools require service hours.

Yet, even in the midst of these mixed motives, the high school students we surveyed who served in middle school or children’s ministry seemed to have stickier faith in college. Part of that is probably due to the type of student who is likely to volunteer to serve younger children, but nonetheless, more than just babysitting, being involved in children’s ministry seems to be faith building.

*Intergenerational Insight #3: High school seniors don’t feel supported by adults in their congregations.*

As a research team, we weren’t all that surprised that, of five major sources of support (adults in the congregation, parents, youth workers, friends in youth group and friends outside youth group), high school seniors ranked adults in the congregation last.

What did surprise us was how far behind they were the other four groups. One graduate reported that his church “would talk about having students involved, but they never really did.” Another reflected that church members “wanted nothing to do with us... I think they see us as kind of scary in that we’re the people on the news, you know, who are dealing drugs and getting pregnant and all those sort of things...keeping us separate and treating us like we were a hazard.”

*Intergenerational Insight #4: By far, the number-one way that churches made the teens in our survey feel welcomed and valued was when adults in the congregation showed interest in them.*

More than any single program or event, kids



were far more likely to feel like a significant part of their local churches when adults made the effort to get to know them. One student beamed as he said, “We were welcomed not just in youth group; we were welcomed into other parts of the ministry of the church: the worship team on Sunday mornings, teaching Sunday school to kids and helping with cleaning and serving. All these other types of things really just brought the youth in and made them feel like they had a place and even feel like they were valued as individuals.”

See more at: <http://stickyfaith.org/articles/the-church-sticking-together#sthash.1qaVZPU9.dpuf>



I hope you have taken the opportunity to join a small group studying the texts using the outline that Pastor Peter has given us for the last several weeks. Exploring the scriptures with my Hope family has been very interesting and informative. I really enjoyed the sections in Acts, especially Acts 19:8, where we were reminded that *"Paul entered the synagogue and spoke boldly there for three months, arguing persuasively about the kingdom of God."* Often we say that you will never "argue" someone into becoming a Christian, but obviously Paul did.

Recently, Bernadette and I were helping with a Lutheran Marriage Encounter weekend at a nearby hotel. Due to a conflict, our group was being moved to a different conference room on Saturday evening. The room we were being moved into was still occupied, although the hotel staff informed us they were scheduled to have been out of there 20 minutes previously. While we were waiting to get in we noticed a sign outside the door indicating the group worshipped one God, which is obviously what we confess as well, so we thought they would be fun to interact with as we were moving into the room. Turns out, nothing could have been further from the truth. Their presentation was over but the people had broken into groups of four or five and were completely engrossed in discussion and debate with each other. As we moved into the room we were as invisible as ghosts to them. There was just something weird about them. I couldn't place it. Their faces had a distinct lack of joy for people who claimed they knew God. I've seen more joy at one of our congregational meetings when discussing a budget deficit! Maybe they just had a lousy meal that night, but, after catching bits and pieces of their conversations, I later raised some eyebrows in our Marriage Encounter group when I suggested I didn't think they were worshipping the God we do. That evening I googled their group and my suspicions were correct. They deny the deity of Jesus and the existence of the Holy Spirit while accepting only what we refer to as God the Father. At their seminars they listen to each other's ideas on how to substantiate that claim, even trying to use some biblical passages out of context to "prove" their point. Wow, that would take my joy away too!

So, with the story of Paul in Ephesus fresh in my mind, I wondered what Paul would do if he had been at the hotel

that night. I'll bet he would have come alongside one of the groups and listened for a while, then explained some of the dozens of Old Testament prophecies about Jesus and how they were fulfilled. Then he might have mentioned what he wrote to the Philippians in chapter 2:6-11 *"Who, being in very nature God, did not consider equality with God something to be used to his own advantage; rather, he made himself nothing by taking the very nature of a servant, being made in human likeness. And being found in appearance as a man, he humbled himself by becoming obedient to death - even death on a cross! Therefore, God exalted him to the highest place and gave him the name that is above every name, that at the name of Jesus every knee should bow, in heaven and on earth and under the earth, and every tongue acknowledge that Jesus Christ is Lord, to the glory of God the Father."* That explains Jesus before and after his life on earth. Or maybe he would mention what Peter said in Acts 4:12 *"Salvation is found in no one else, for there is no other name under heaven given to mankind by which we must be saved."* And of course there are many more passages he could use. We always stress that we should witness about Jesus in a winsome, loving way, and I agree with that. And we know that Paul and the disciples in Ephesus really loved each other, because they wept when he left. But considering the other side of Paul, how many riots he started when he preached somewhere, I wonder how far he would have gone the other night in the hotel? I'll bet he would have taken them on full force, accused them of heresy, and ended up getting thrown out!

So, how is your joy?  
Has it been stolen by  
the pressures and the  
desires of the world?  
Have you misplaced  
priorities in your life?  
I know it's easy for

me to get sucked into being too busy, even with good things. This Christmas season would be a great time to reprioritize and spend time where it should be spent. Abide in His word, pray constantly, and praise God that Jesus, yes, Immanuel - God *IS* with us! That brings GREAT joy that needs to be shared with others.

I wish you a blessed and *joyful* Christmas and New Year!

Loren Sommer  
Elder



# Financial News

## Fiscal 2015/2016 Budget Status – Budget A Versus B

From the Board of Directors: In June, we proposed a two scenario budget to the congregation for fiscal 2015/2016: Budget A provides for a 1% pay increase for all staff and Budget B provides for a 3% pay increase for all staff (Budget B would be adopted mid-year if church and school income budgets were met). Staff received a 1% pay increase at the start of the fiscal year on July 1. Presently, the Board of Directors has chosen to continue to operate under Budget A because offerings are running below budget. The Board will reevaluate where we are after the end of December and may consider an alternative where we would pay an additional 2% increase to staff beginning on January 1, 2016 (rather than retroactive to July 1, 2015), if overall income is on budget.

### October 2015

Our fiscal year is  
July 1 to June 30.

	Current Month	Year to Date	Budget	Favorable (Unfavorable) Variance
Offerings	\$ 40,457	\$ 188,912	\$ 217,413	\$ (28,501)
School Income	118,613	471,053	441,533	29,520
Interest & Other	383	4,277	3,767	510
Total Income	159,453	664,242	662,713	1,529
Personnel Expense	129,044	480,507	495,667	15,159
Supplies Expense	28,761	69,249	67,103	(2,145)
Facilities Expenditures	17,985	41,309	51,587	10,277
Debt Service	17,694	70,776	70,777	1
Missions	1,125	2,250	1,500	(750)
Total Expense	194,609	664,092	686,633	22,542
Operating Surplus	(35,156)	151	(23,920)	24,071

### General Fund Summary Balance Sheets

	6/30/2015	10/31/2015
Cash - General	\$ 796,580	\$ 761,366
School Receivables, Net & Prepays	10,689	779,230
<b>Total Assets</b>	<b>807,269</b>	<b>1,540,596</b>
Designated Funds - Agency	2,858	5,062
Designated Funds - School	99,710	128,335
Designated Funds - Church	184,528	129,709
Unearned Tuition	125,523	880,732
Other Liabilities	5,379	7,422
<b>Total Liabilities</b>	<b>417,999</b>	<b>1,151,261</b>
<b>Fund Balance</b>	<b>389,271</b>	<b>389,334</b>
<b>Total Liab &amp; Fund Balance</b>	<b>\$ 807,269</b>	<b>\$ 1,540,596</b>

### FINANCIAL REVIEW COMPLETE -

The Board of Directors is pleased to report that a financial review has been completed for the fiscal years ending June 2013, 2014 and 2015. The review followed the work program provided by the Northwest District Office and was performed by MaryAnne Erickson and Mathilda Hemme. A copy of the report is available in the Commons or from the church office.

# Financial Peace University - New Class begins January 25

---

**Dave Ramsey's Financial Peace University  
is back at Hope!**



**Classes begin Monday, January 25, 7:00 p.m.** and will teach you how to get rid of debt, manage your money, spend and save wisely—God's way of handling money!

We all need a plan for our money. *Financial Peace University* (FPU) is that plan! Through video teaching, class discussions and interactive small group activities, FPU presents biblical, practical steps to get from where you are to where you've dreamed you could be. FPU classes meet on Mondays for an hour and a half each week for nine weeks.

Register online at [daveramsey.com](http://daveramsey.com) and purchase your lifetime membership kit for \$102.30 including shipping. Childcare can be available by prior reservation for \$20 donation per family. For more information, please contact Larry Koltz at 206-932-8036.

Plan to join us so you can...

***Live like no one else now so you can live and give like no one else in the future!***



## Mighty Mites - Marching Mightily with a Mission!

---

Since our recent LWML Sunday event when Mite boxes were offered to worshipers, Mites have been coming in beautifully. One week there was a total of over \$60 donated, which was wrapped, counted and sent to Lutheran Women's Missionary League - Mites project. This will enable the many mission projects which are funded by Mites to be accomplished for thousands of poor and needful people around the world, including right here in the Northwest. The following are just a few of those projects: Christian education, water, mattresses, housing, outreach, coffee, Braille materials, gardens, trailers, and many more! For a complete list of Mite grant recipients, please pick up the list in the Commons next to the large Mite collection box.



Parents of Hope Lutheran School, please note:

Kid Mite boxes will be offered to students at a future Chapel service by Patra Mueller, Family Life Minister. The collection box for Kid Mites is next to the school office. Please check the note which is tucked into each Kid Mite box for more details.

**LET'S ALL KEEP THOSE MIGHTY MITES MARCHING MIGHTILY!** In our world, which needs the love of Jesus and His Gospel SO DESPERATELY, we can all help! So, let's each do our part to share God's love and His promises with needful people of the world.

- Irene Gehring





**HOPE LUTHERAN**  
CHURCH & SCHOOLS

4456 - 42nd Ave SW, Seattle, WA 98116

Non-Profit Org.

U.S. Postage

PAID

Seattle, WA

Permit No. 779

Peter Mueller, Senior Pastor pmueller@hopeseattle.org  
Julia Doerr, Parish Administrator jdoerr@hopeseattle.org  
Kristen Okabayashi, Principal kokabayashi@hopeseattle.org  
Patra Mueller, Family Life Minister patramueller@hopeseattle.org  
Jonathan Kopecky, Youth Minister jkopecky@hopeseattle.org  
Amy Kopecky, Dir. of Music Ministry akopecky@hopeseattle.org  
Elissa Sommer, Human Care Ministry nesommer@comcast.net  
Dan Jackson, Deacon djackson@hopeseattle.org  
Patrice Wolanin, Secretary church@hopeseattle.org

**Sunday Schedule:**

8:00 am Traditional Worship  
9:30 am Education & Sunday School Hour  
10:30 am Contemporary Worship

Phone: 206-937-9330  
www.hopeseattle.org  
E-mail: church@hopeseattle.org



## CHRISTMAS SCHEDULE

Saturday, December 5	8:00 a.m.	HCM Shopping for the Giving Tree
Sunday, December 6	12:30 p.m.	Gift Wrapping Party ~ Fellowship Hall
<i>December 7 - 17</i>		<i>Gift Wrapping all week ~ Fellowship Hall</i>
Wednesday, December 9	7:00 p.m.	School 1-5 Grade Christmas Performance
Friday, December 11	6:30 p.m.	School Preschool & Kindergarten Performance
Saturday, December 12	9:30 a.m.	Christmas Tree & Sanctuary Decorating
Saturday, December 12	4:15 p.m.	Christmas Carol & Ship Event ~ Alki Bathhouse
Sunday, December 13	10:30 a.m.	Sunday School Program ~ Sanctuary
Wednesday, December 16	7:00 p.m.	Hope School & SLHS Sounds of Christmas Concert ~ Sanctuary
Friday, December 18	12:00 p.m.	Hope School Christmas Break Begins
Thursday, December 24	4:00 p.m.	Christmas Eve Family Service
	6:00 p.m.	Christmas Eve Contemporary Service
	11:00 p.m.	Christmas Eve Candlelight and Communion Service
Friday, December 25	10:30 a.m.	Christmas Day Traditional Worship Service